



TECHNICAL INFORMATION PACKAGE

Owned & Operated By:





TABLE OF CONTENTS

	<u>PAGE</u>
Staff Directory	03
Theatre Seating Information	04-06
Orchestra Level Seating Chart	05
Loge & Balcony Level Seating Chart	06
Theatre Stage Information	07
Stagehand Conditions/ Working Wage Agreement	08-10
Facility Floor Plans	11-24
Full Facility Floor Plan (<i>coming soon</i>)	11
First Level Floor Plan (<i>coming soon</i>)	12
Second Level Floor Plan (<i>coming soon</i>)	13
Dressing Room Floor Plans & Measurements	14-16
Dressing Room Photos	17-18
Atlantic Room Floor Plan	19
Atlantic Room Photos	20
Rose Room Floor Plan	21
Rose Room Photos	22
Lobby Floor Plan (<i>coming soon</i>)	23
Lobby Photos	24
General Measurements & Information	25
Loading Dock Photos	26
Lighting System & Inventory	27-28
House Lighting Plot	29
Sound System & Audio Inventory	30-31
Microphone Inventory	32
Production Communication	32
Auditorium Line Set Schedule	34
Miscellaneous House Inventory	35
Theatre Piano	36
Rigging Points & Information (<i>coming soon</i>)	37
Event Marketing	38
Venue Specific Advertising Information	39
Local Information	40
Directions	41

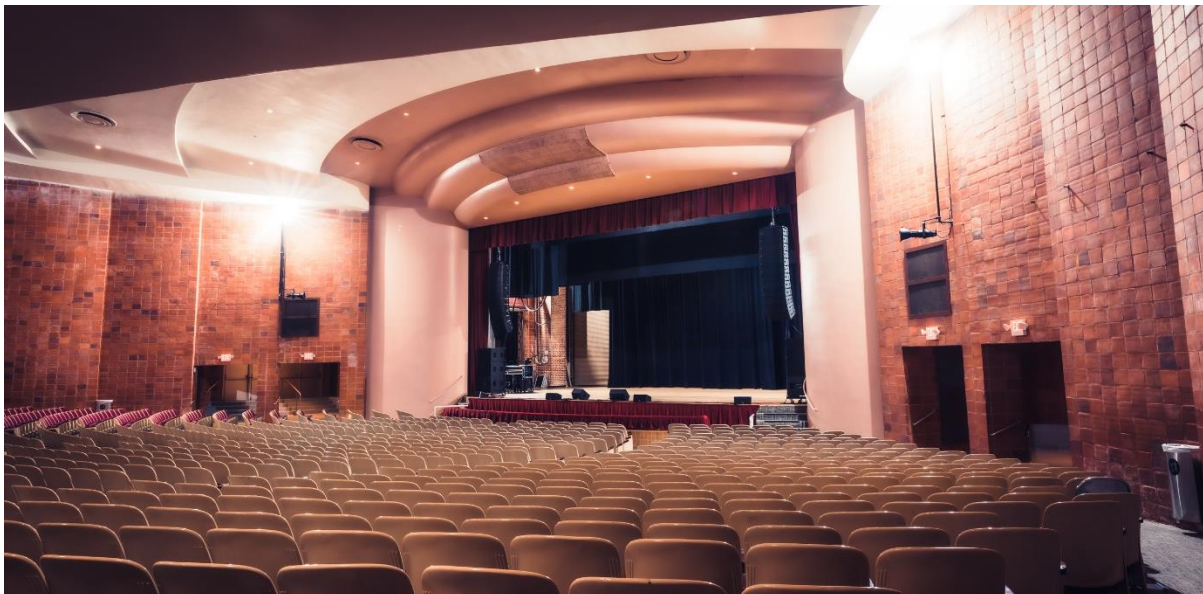
PEABODY AUDITORIUM STAFF AND GENERAL INFORMATION

PEABODY AUDITORIUM STAFF

Entertainment Venues Manager	Chad Smith	smithchad@codb.us
Entertainment Venues Assistant	Tiffany Howard	howardtiffany@codb.us
Operations Manager	CJ Walls	wallscharles@codb.us
Digital Media Specialist	Emilie Smart	smartemilie@codb.us
Box Office Manager	Kevin Doherty	dohertykevin@codb.us
Box Office Assistant	Ashley Walker	walkerashley@codb.us
Operations Support	Terri Montgomery	montgomeryterri@codb.us
Food and Beverage Assistant	Ingrid Laas	laasingrid@codb.us
Security	Best Crowd Management	
Technical Director	Don Steadman	don@suncoproductions.com

GENERAL INFORMATION

Administrative Offices	386-671-3460 PeabodyAuditorium@codb.us
Ticket Office	386-671-3462 PeabodyBoxOffice@codb.us



SEATING CAPACITIES

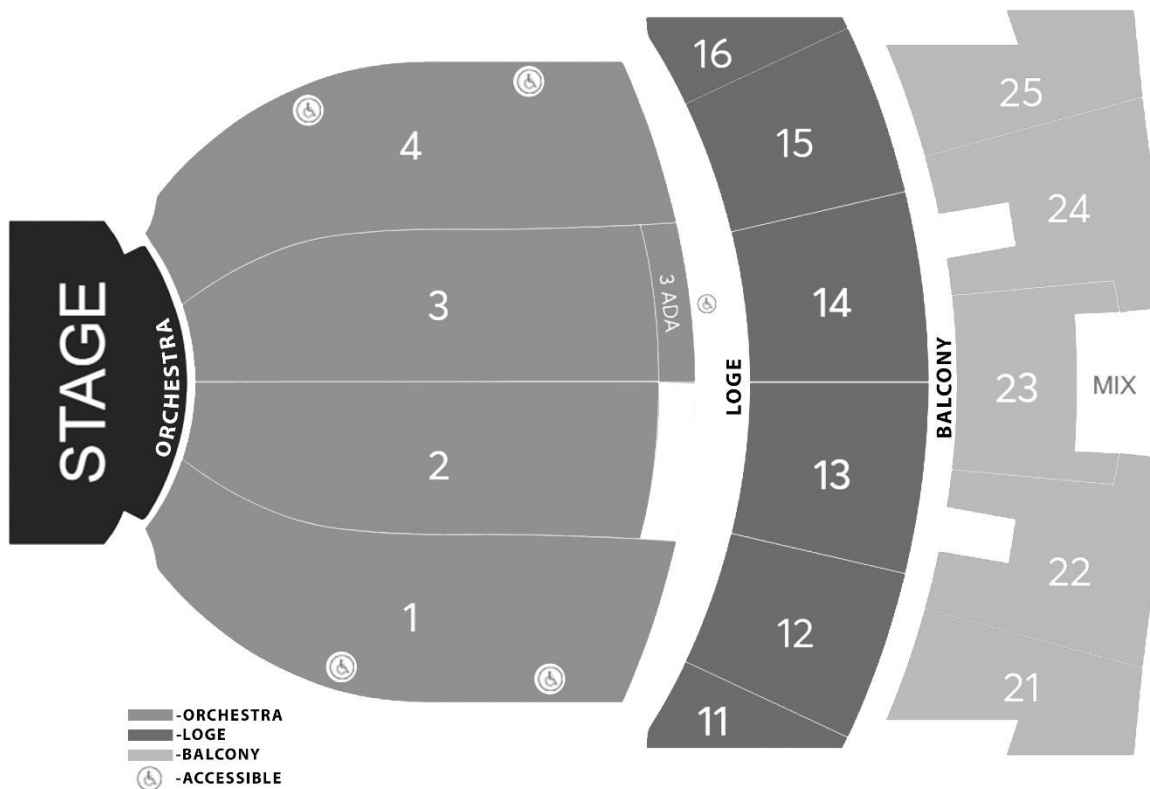
Orchestra Level: 1,502

PIT (on select performances): 18

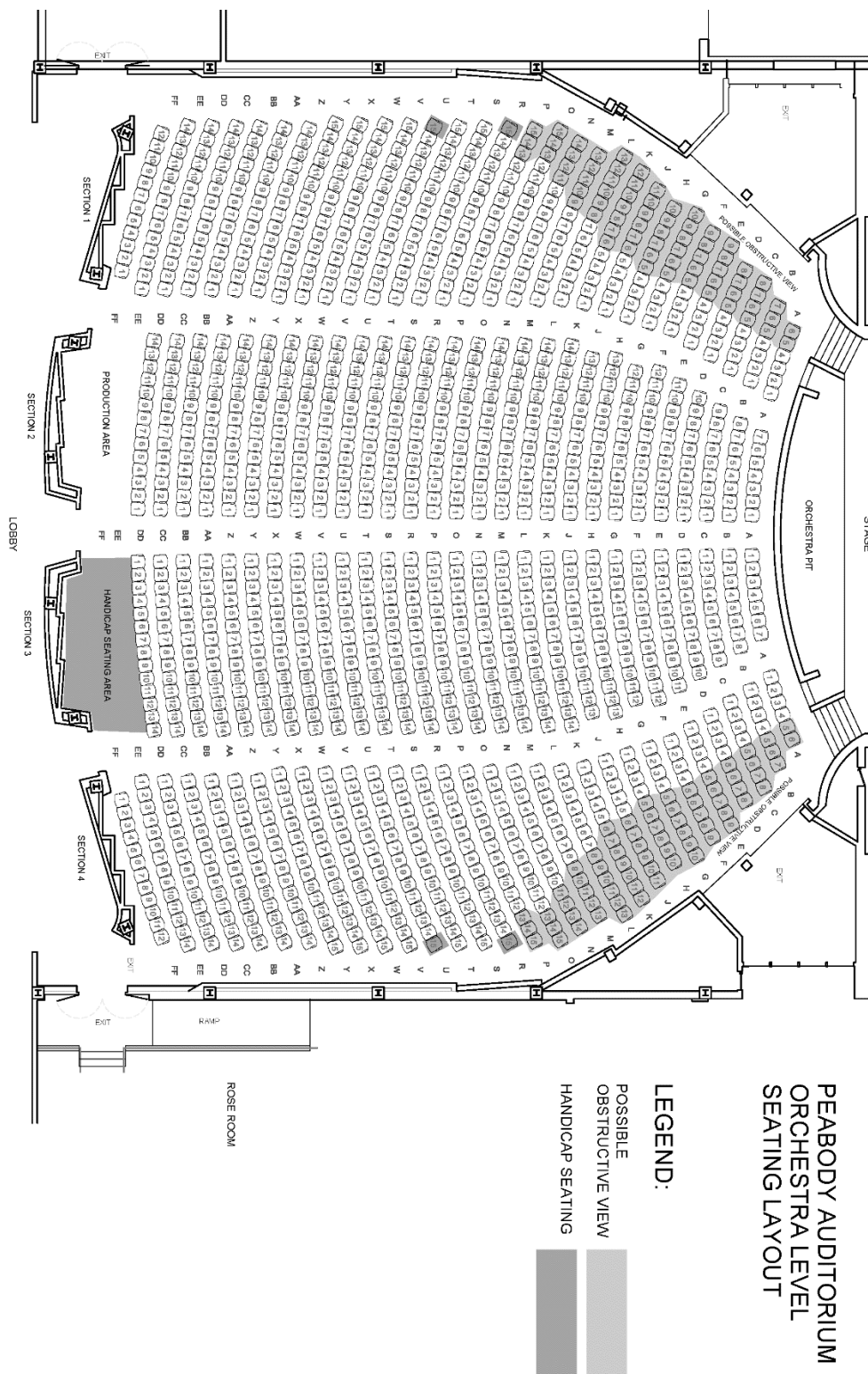
Loge: 519

Second Balcony: 506

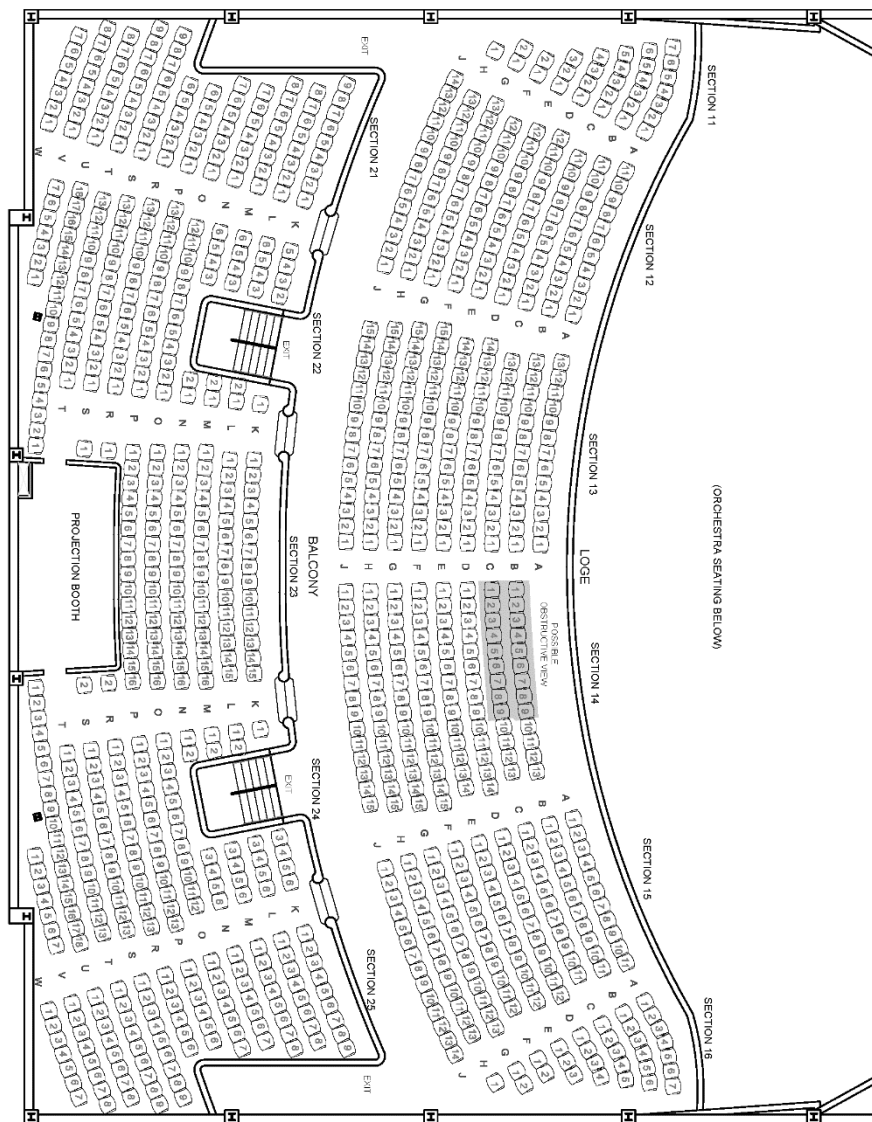
Total Seats: 2,545 (including fully obstructed seats)



ORCHESTRA LEVEL SEATING CHART

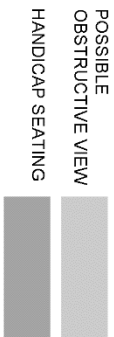


LOGE AND BALCONY LEVEL SEATING CHART



**PEABODY AUDITORIUM
BALCONY & LOGE LEVEL
SEATING LAYOUT**

LEGEND:



STAGE INFORMATION





STAGEHAND CONDITIONS/WORKING WAGE AGREEMENT (as of 6/15/21)

1. There shall be a four (4) hour minimum call on all original calls. (In/Performance/Out). Rehearsals shall be at hourly rate.
2. The show shall be a four (4) hour minimum call. Times the rate of his or her pay.
3. Overtime shall apply if employee works over eight (8) hours on any of the separate calls, or between the hours of 12 am and 7 am. Overtime shall consist of one and one-half (1-1/2) times the employee's rate.
4. COMMERCIAL RATES: Commercial rates apply. Contact Don Steadman (386)-547-7113 or (386)-671-3464.
5. MEALS: A worker shall receive an unpaid meal period of one (1) hour to begin after the end of the fourth (4th) hour and prior to the start of the sixth (6th) hour.

In the event that any workers are not permitted an unpaid meal period of (1) hour duration, the company, in lieu of any penalty provision and at its sole option, may provide a meal at their expense for the workers during a one half (1/2) hour meal break. In the event that any workers are not permitted any meal period, the company shall pay such worker the prevailing hourly rate plus one half (1/2) hour straight time per hour as a meal penalty. The meal penalty shall continue until such workers are given a meal period.

6. The company shall be solely responsible for determining the rest and meal schedule for each worker. The Technical Director or lead will make a reasonable effort to notify the company supervisor in the event of any pending meal or rest period penalty.
7. HOLIDAY WORK: A worker shall be paid time and one half his or her basic hourly rate for all work performed on the following legal holidays as observed by the Federal Government:
 - a. New Year's Day
 - b. Christmas Day
 - c. Memorial Day
 - d. Independence Day
 - e. Thanksgiving Day
 - f. Easter Day
 - g. Labor Day
 - h. Martin Luther King Day
8. PAYROLL COMPANY: The payroll company for SUNCO PRODUCTIONS, is WorkLife HR twenty five percent (25%) shall be added to the gross wages for their services. This includes liability/workman compensation and payroll services for the employees.

Administration Fee shall be 15%.

**STAGEHAND CONDITIONS/WORKING WAGE AGREEMENT (as of 6/15/21)**

All payroll checks are to be made out to:

SUNCO PRODUCTIONS, INC.

P.O. Box 289

Daytona Beach, Florida 32115

9. All payroll settlements are done prior to show intermission.

10. The wage increase for each year shall be as follows:

- Effective 1/01/21 - \$0.50 hr.
- Effective 1/01/22 - \$0.50 hr.
- Effective 1/01/23 - \$0.50 hr.
- Effective 1/01/24 - \$0.50 hr.
- Effective 1/01/25 - \$0.50 hr.
- Effective 1/01/26 - \$0.50 hr.
- Effective 1/01/27 - \$0.50 hr.

**Working Wage Agreement for Stage Productions, Concerts, Graduations,
Ice Shows, Dance Companies, or Any Other Stage Productions Involving
Stagehands or Technicians for Services Rendered.**

Referrals of workers under the Agreement will be from SUNCO PRODUCTION, INC. call list. The parties agree that the referral of workers shall be on a non-discriminatory basis without regard to race, sex, age, national origin.

Rates & Conditions - Effective 1/01/16 - 12/31/21

REGULAR TIME

Description	Hourly Rate	25% W/C	15% Admin	Billable Rate
Technical Director	\$23.50	\$5.88	\$3.53	\$32.90
Head Electrician	\$22.50	\$5.63	\$3.38	\$31.50
Audio Engineers	\$22.50	\$5.63	\$3.38	\$31.50
Head Carpenter	\$22.50	\$5.63	\$3.38	\$31.50
Head Props	\$22.50	\$5.63	\$3.38	\$31.50
Wardrobe Manager	\$22.50	\$5.63	\$3.38	\$31.50
Riggers (Up/Down Certified)	\$24.50	\$6.13	\$3.68	\$34.30
Stage Hands	\$21.50	\$5.38	\$3.23	\$30.10
Spot Operators	\$21.50	\$5.38	\$3.23	\$30.10
Forklift Operators (Certified)	\$21.50	\$5.38	\$3.23	\$30.10
Truckloaders	\$21.50	\$5.38	\$3.23	\$30.10
Runners (Car Provided)	\$18.50	\$4.63	\$2.78	\$25.90

STAGEHAND CONDITIONS/WORKING WAGE AGREEMENT (as of 6/15/21)

OVERTIME (AT 1.5X)

Description	Hourly Rate	25% W/C	15% Admin	Billable Rate
Technical Director	\$35.25	\$8.81	\$5.29	\$49.35
Head Electrician	\$33.75	\$8.44	\$5.06	\$47.25
Audio Engineers	\$33.75	\$8.44	\$5.06	\$47.25
Head Carpenter	\$33.75	\$8.44	\$5.06	\$47.25
Head Props	\$33.75	\$8.44	\$5.06	\$47.25
Wardrobe Manager	\$33.75	\$8.44	\$5.06	\$47.25
Riggers (Up/Down Certified)	\$36.75	\$9.19	\$5.51	\$51.54
Stage Hands	\$32.25	\$8.06	\$4.84	\$45.15
Spot Operators	\$32.25	\$8.06	\$4.84	\$45.15
Forklift Operators (Certified)	\$32.25	\$8.06	\$4.84	\$45.15
Truckloaders	\$32.25	\$8.06	\$4.84	\$45.15
Runners (Car Provided)	\$27.75	\$6.94	\$4.16	\$38.85

Rate Adjustments

Rates will be subject to a four-hour minimum on all the original calls (In/Performance/Out). The four-hour minimum applies to performance but not rehearsals.

Overtime Rates of 1.5 times the general rate apply for (i) personnel who work over eight hours on any of the separate call (ii) Personnel who work between the hours of 12am and 7am.

Holiday Pay equal 1.5 times the general rate listed will apply for work performed on the following legal holidays: New Years Day, Memorial Day, Independence Day, Easter, Martin Luther King Day, Labor Day, Thanksgiving, and Christmas.

For more information, please contact Sunco Productions representative Don Steadman, Technical Director at (386) 671-3464 or (386) 547-7113.



FULL FACILITY FLOOR PLAN

**COMING
SOON**



FIRST LEVEL FLOOR PLAN

**COMING
SOON**



SECOND LEVEL FLOOR PLAN

**COMING
SOON**

DRESSING ROOMS FLOOR PLANS & MEASUREMENTS

The Peabody Auditorium has 2 dressing rooms and a Green Room on the first floor of the venue along with 5 unisex dressing rooms on the second floor.

The entire building has a secured wireless internet connection for client use only. The password will be made available to you upon your arrival.

FIRST FLOOR/STAGE LEVEL

ROOM	SIZE	BATHROOM	SHOWER	INTERNET ACCESS
Dressing Room #1 (Handicap Accessible)	8' W x 12' D	Yes	Yes	Yes
Dressing Room #2	8' W x 12' D	Yes	Yes	Yes
Green Room (Handicap Accessible)	10'6" W x 16' D	No	No	Yes

* The Green Room connects with dressing room #2 and contains a 32-inch cable tv, telephone, Bluetooth speakers, Hardline Internet connection, a Keurig, mini microwave, and mini fridge.

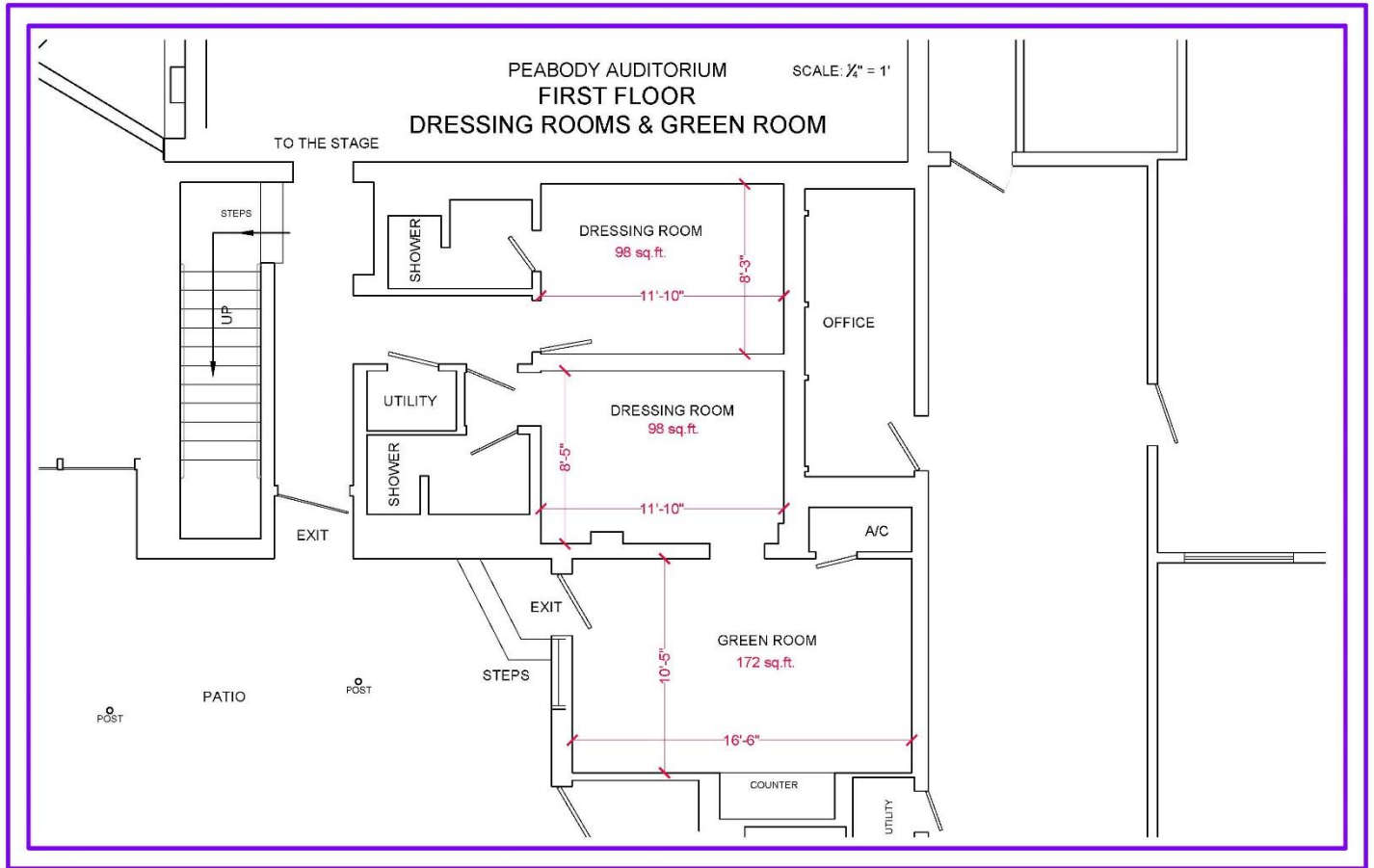
*Restrooms in the downstairs dressing rooms have one toilet and one shower.

SECOND FLOOR

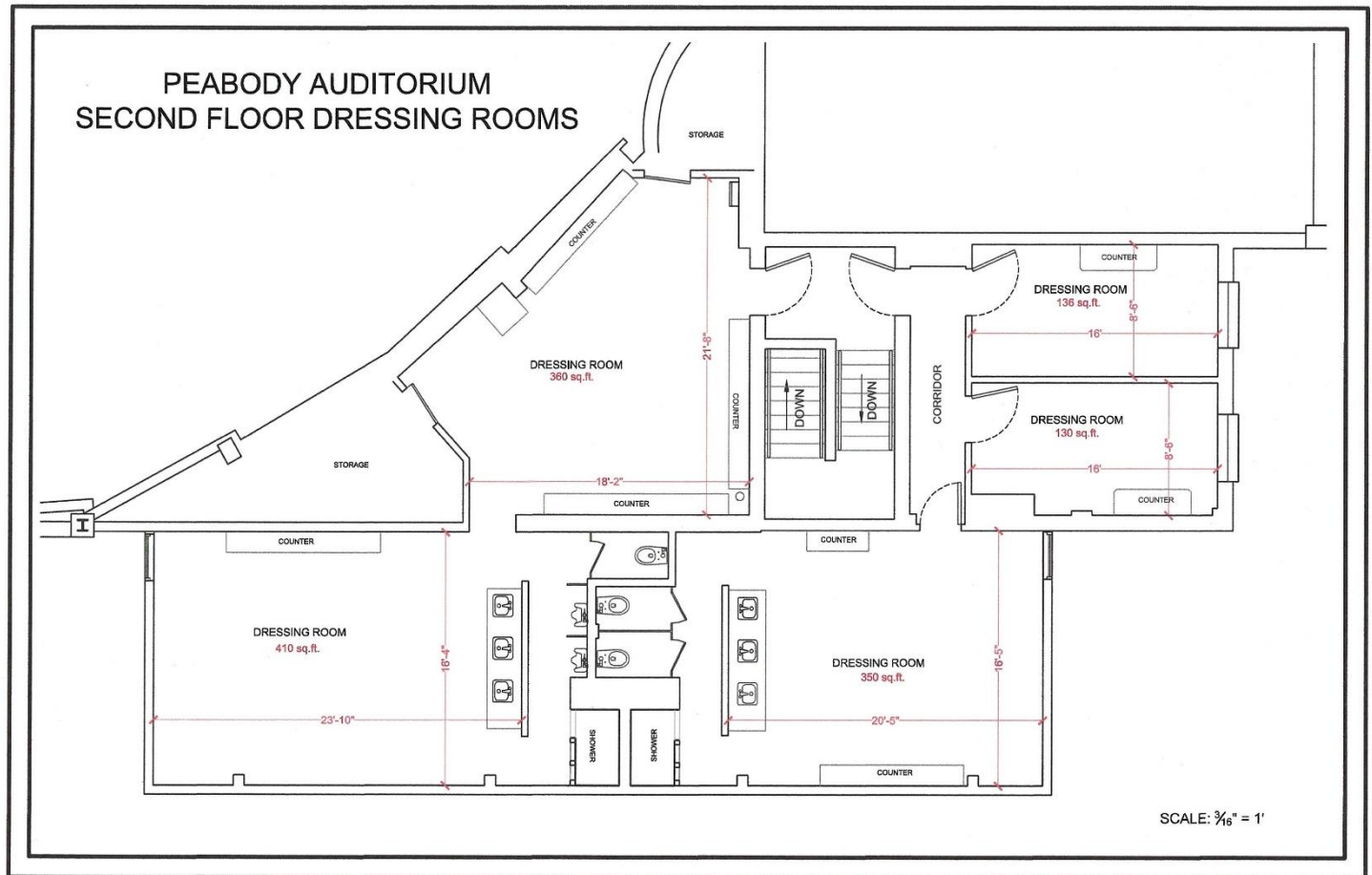
ROOM	SIZE	BATHROOM	SHOWER	INTERNET ACCESS
Dressing Room #3	20' W x 22' D	No	No	Yes
Dressing Room #4	16'6" W x 30' D	Yes	Yes	Yes
Dressing Room #5	16'6" W x 30' D	Yes	Yes	Yes
Dressing Room #6	8'6" W x 16' D	No	No	Yes
Dressing Room #7	8'6" W x 16' D	No	No	Yes

*Dressing Room #3 adjoins with Dressing Room #4. Restrooms in Dressing Room #4 contain 2 urinals and one stall. Dressing Room #3 has three stalls.

FIRST FLOOR DRESSING ROOM FLOOR PLAN



SECOND FLOOR DRESSING ROOM FLOOR PLAN



DOWNSTAIRS DRESSING ROOM PHOTOS



UPSTAIRS DRESSING ROOM PHOTOS



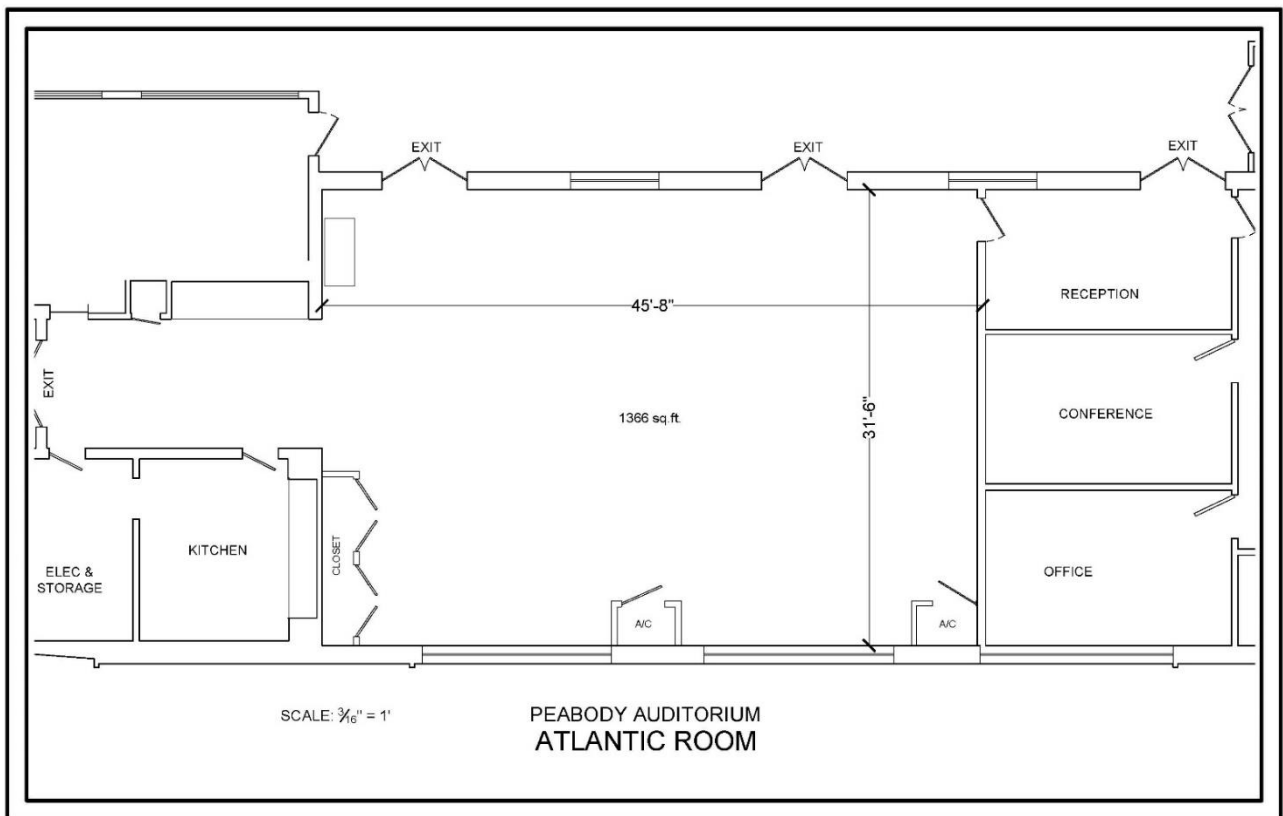
ATLANTIC ROOM FLOOR PLAN

The Atlantic room is a multipurpose space with a floating wooden dance floor, frequently used for rehearsals and warmups. Kitchen and laundry facilities are adjacent to the Atlantic room.

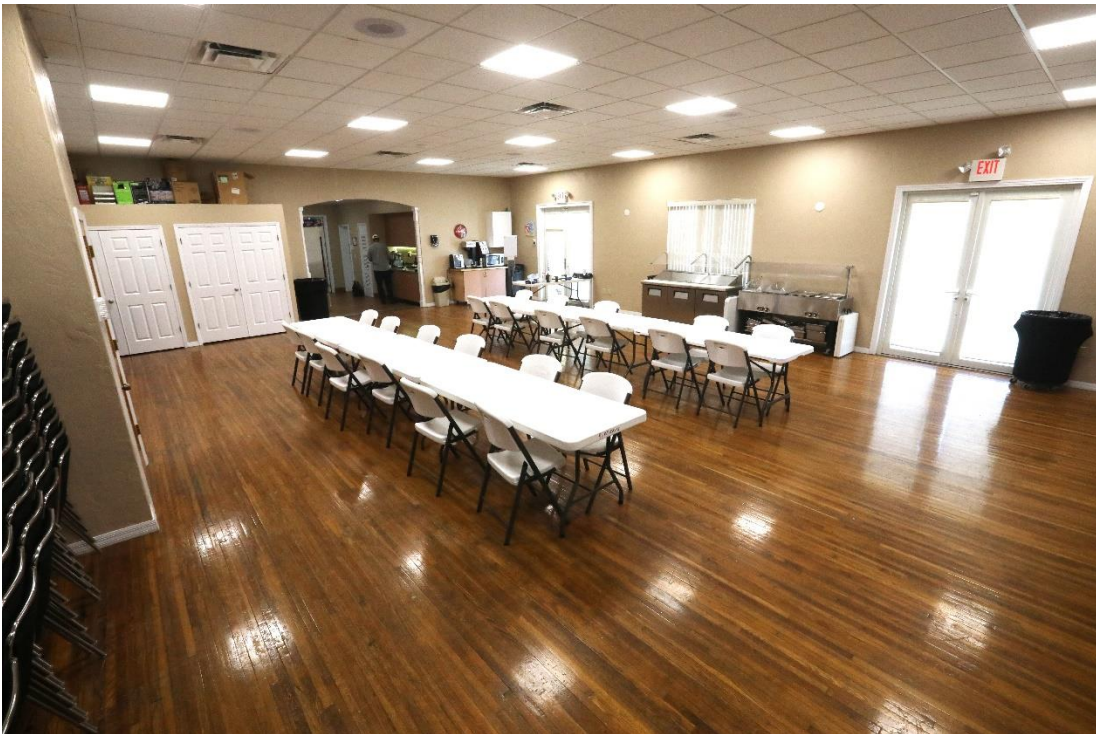
Size: 1366 square feet

Capacity: 64

Internet Access: Yes



ATLANTIC ROOM PHOTOS



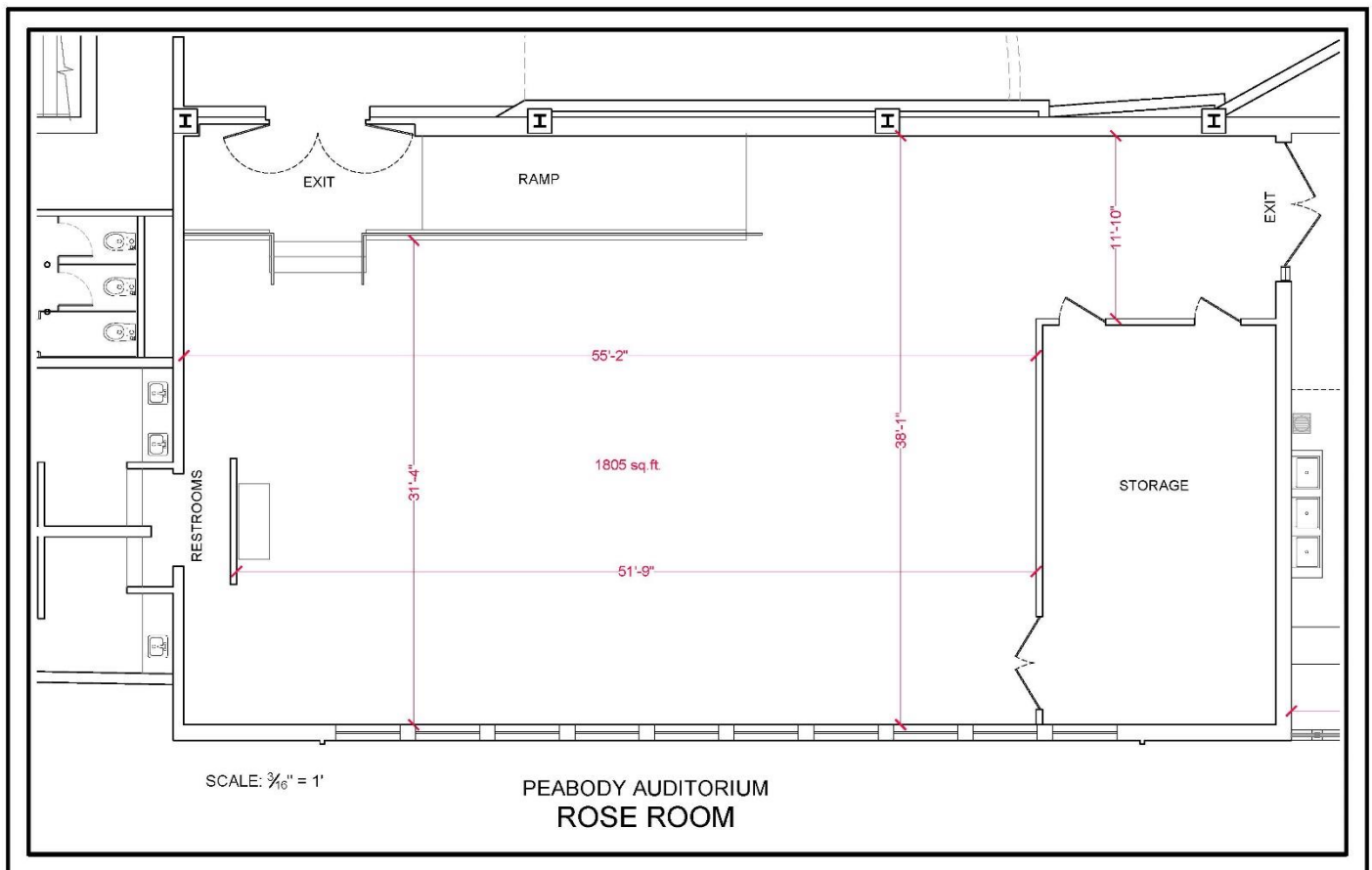
PEABODY ROSE ROOM

The Peabody Auditorium Rose Room is a unique space available to rent separately or as a package. The Rose Room can be used for meetings, banquets, receptions, and exhibits.

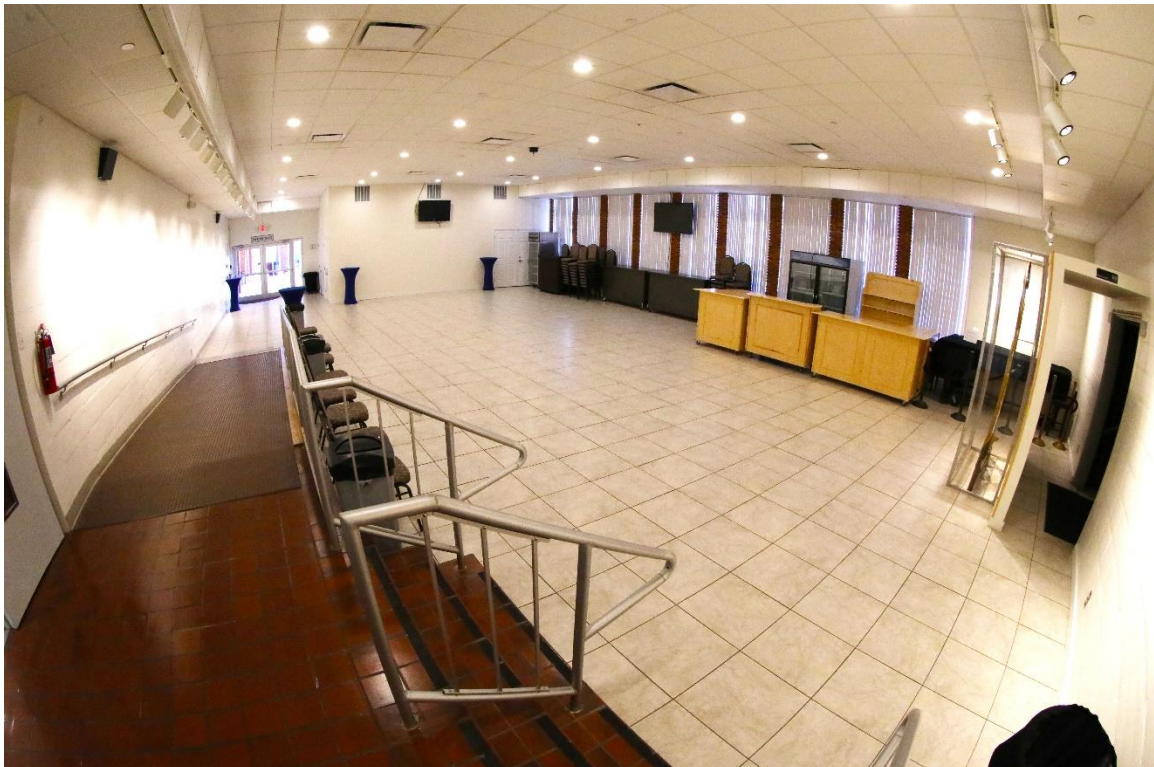
Size: 1,805 square feet

Capacity: 87

Internet Access: Yes



PEABODY ROSE ROOM PHOTOS



LOBBY FLOOR PLAN

**COMING
SOON**



LOBBY PHOTOS



GENERAL MEASUREMENTS & INFORMATION

STAGE SPECIFICATIONS	MEASUREMENT
Proscenium Height	Height 22'0"
Proscenium Width	Width 47'0"
Stagehouse	Width 82'0" Depth 35'0" from upstage wall to proscenium Apron 3'3"
Centerline to SL locking rail	38'
Centerline to SR wall	40'
Grid Height	51' high trim out 44'0"
Individual Arbor Weight	1800 lbs
Spare Counterweight – With Lights & Drapes	4640 lbs
Spare Counterweight- Fully Stripped	8480 lbs
Snake Route from Stage to Under Balcony Mix Position	250'
Orchestra Shell	Wenger full stage enclosure; 10 walls and 4 ceiling pieces, built-in overhead fixtures distribute 18k quartz lighting, 3 entrance door sets per side
Distant from Follow Spot Booth to the Downstage edge of stage	135'
PIT	MEASUREMENT
Orchestra Pit Cover	Manual 9' x 47'
Depth of Pit at House Level	4'5"
Lowest Depth of Pit from Stage	5'2"
Internal Width of Pit	32'6"
Distance of Pit from Stage to Arch of Pit Wall	8'6"
LOADING DOCK	MEASUREMENT
Southeast Corner Covered	12'x 15' dock at 14" above street level
Loading Dock Rollup Door	9'x 14'
2 BUS power connections 50 AMPS each 125 / 250 VOLT AC with NEMA 14-50 plug	50' extension available upon request

*** Stage Counterweight System:**

- Single purchase 8: O.C. Tee track, 8' arbors
- Operates from stage left at deck level, 2 bridges
- 35 total line sets

LOADING DOCK PHOTOS



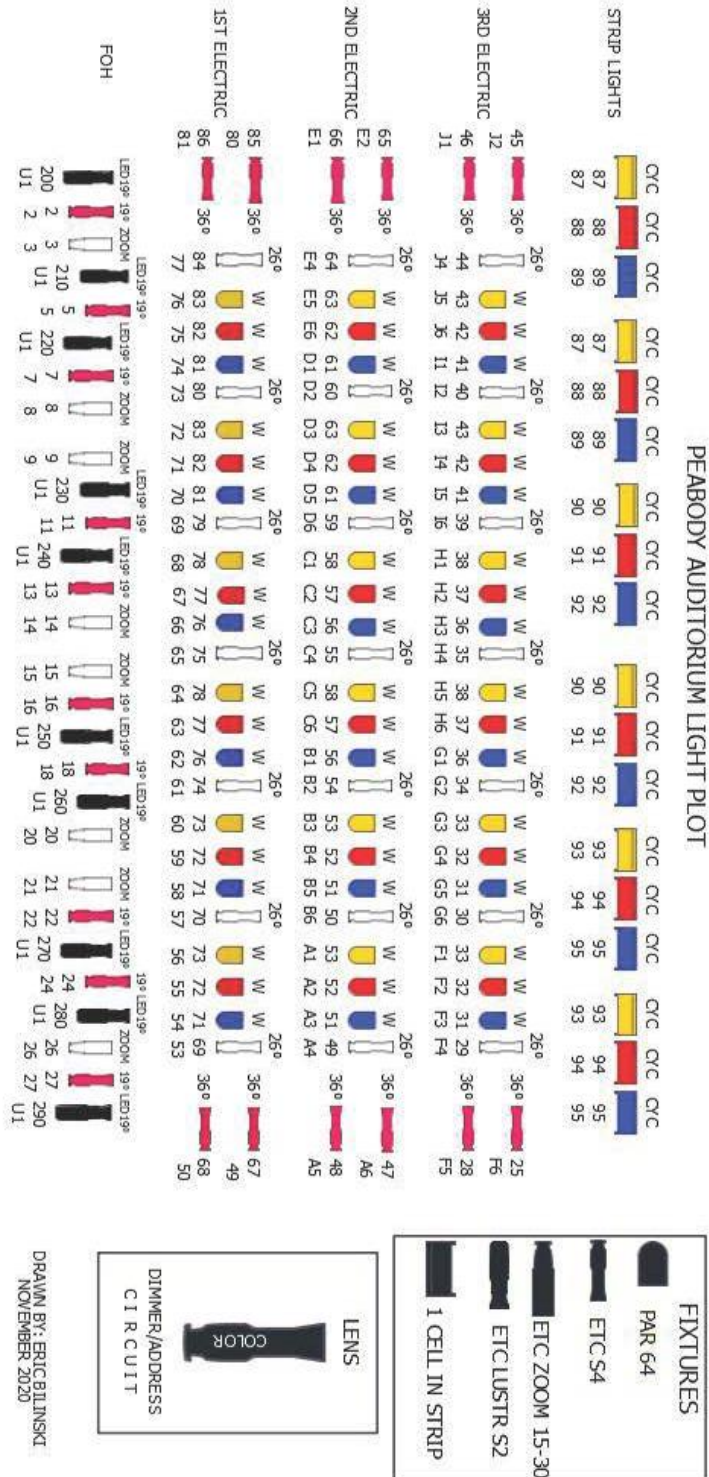
LIGHTING SYSTEM & INVENTORY

QUANTITY	DESCRIPTION
	<u>FOH COVE FIXTURES</u>
10	ETC source four led series 2 lustr (EDISON)
10	ETC source four 19° ellipsoidals with 750 watt lamp (STAGE PIN)
8	ETC source four 15° to 30° zoom with 750 watt lamp (STAGE PIN)
	<u>STAGE FIXTURES</u>
54	PAR 64 wide len 1000 watt lamp (STAGE PIN)
21	ETC source four 26° ellipsoidals with 750 watt lamp (STAGE PIN)
12	ETC source Four 36° ellipsoidals with 750 watt lamp (STAGE PIN)
6	3 CELL Cyc lights with 1000 watt lamp (STAGE PIN)
4	MARTIN mac quantum profile (EDISON) *available for additional cost
	Note: Stage pin connector 3 pin 20amp (hot, neutral, and ground)
	<u>ACCESSORIES</u>
12	SIZE B PATTERN HOLDERS
1	SOURCE FOUR IRIS KIT
4	50° LENSES SOURCE FOUR ELLIPSOIDALS
	<u>FOLLOW SPOT</u>
2	Xenon Strong Super trouper follow spots with 1600 watt lamp
1	*available for an additional cost Xenon Strong Super trouper follow spots with 1600 watt lamp
	<u>DATA</u>
	DMX 512 5 pin SL Universe 1 Universe 2 Universe 3 to BOOTH
	SR Universe 1 Universe 2 to BOOTH
2	Dmx 5 pin lines from FOH COVE to SR
1	Portable foh snake from stage to under balcony mix position with (1) 5pin dmx line and (2) 3pin com lines
	Note: All house fixtures are on Universe 1
	<u>NETWORK PORTS</u>
	SL 1 RJ45 network port to booth
	SR 2 RJ45 network ports to booth
	Etc response 4 port gateway portable (1) DMX IN and (3) DMX OUT

LIGHTING SYSTEM & INVENTORY

QUANTITY	DESCRIPTION
	CONSOLE
	Etc ion xe 2048 addresses
	Etc fader wing 20 sliders submasters or cue stacks
1	HP laptop with 2 ETC gadgets and product key to enable use as a primary or backup console
2	EOS touchscreen monitors
1	House light controller 1 Down Stage Left (non dmx)
	CIRCUIT LOCATION
28	stage pin dimmers in foh cove
6	edison non dim circuits in foh cove
8	stage pin dimmers house left box boom
8	stage pin dimmers house right box boom
40	stage pin dimmers first electric
30	stage pin dimmers second electric
30	stage pin dimmers third electric
9	stage pin dimmers fourth electric
	DIMMER RACKS
	COLORTAN i96 dimmer rack
	SR COLORTAN i24 dimmer rack(14 dimmers for orchestra shell)
	POWER
2	COMPANY DROPS 400 AMPS 3 PHASE each 120 / 208 VOLT AC with cam lock connectors
	SR Power distro with 15 20amp circuit
2	BUS power connections 50 AMPS each 125 / 250 VOLT AC with NEMA 14-50 plug located by loading dock
3	20 Amp 120 VOLT AC circuits at under balcony mix position

HOUSE LIGHTING PLOT



SOUND SYSTEM & AUDIO INVENTORY

QUANTITY	DESCRIPTION
PEABODY STANDARD HOUSE SYSTEM	
5	EV XLD281 3 Way Line Array Element (mono overhead center cluster)
2	EV XS212 Subs (overhead center cluster)
4	EV XI1082 Front Fills 2x EV XSUBS Floor Subs
5	EV P3000RL PA Power Amplifiers
2	JBL 905 Monitors
2	EV Eliminator Monitors
2	Crown MA-1200 Power Amplifiers
1	Soundcraft GB4 32 Channel Analog Mixing Console (front of balcony position)
28	stage microphone sends to balcony mix position (7 each corner of stage)
1	Lexicon MX400XLV Signal Processor/Effects 2x DBX 166XL Compressor/Limiter/Gate
3	DBX 231 Dual Graphic Equalizers
PEABODY JBL SOUND SYSTEM SPECS	
	New JBL VTX A8 Sound System and Yamaha Consoles installed May of 2020 Dante Network and analog snake options both available.
MAIN PA	
24	JBL VTX A8 Dual 8" Line Array with 110* Horizontal Coverage (12 Boxes Per Side)
8	JBL VTX B18 18" Subwoofers (4 Boxes Per Side)
2	2 Crown VRacks (6x iTech 4x3500 Amps)
	dbx Driverack360 System controller
	https://jblpro.com/en-US/products/vtx-a8
MONITORS	
6	JBL VTX F12 Bi-amped Monitors
6	JBL VTX F15 Bi-amped Monitors
2	2 Crown VRacks (6x iTech 4x3500 Amps)
FOH CONSOLE	
	Yamaha CL5-32 + 2 master faders, 72 mono channel mixing plus 8 stereo channels
MONTIOR CONSOLE	
	Yamaha QL5 64-channel QL Series Digital Mixer

SOUND SYSTEM & AUDIO INVENTORY

QUANTITY	DESCRIPTION
AD/ DA I/ O RACKS/ DANTE NETWORK	
2	Yamaha Rio3224d2 32x16 Dante Stage Boxes
4	Yamaha SWP Dante Switches
2	Wireless Access Points
INFRASTRUCTURE	
1	Whirlwind 48x10 Splitter Snake. 250' Trunk for FOH and 25' Trunk for Monitors
2	CM 1 ton Motors
1	Power Distribution, cabling for main PA only
2	Furman M-8Dx 15A 8+1 Power Conditioner
1	Furman AC-215A 2-Outlet Power Conditioner
DIRECT BOXES	
4	Radial ProDI Direct Box
4	Radial ProD2 2 channel Direct Box
2	Radial J48 active Direct Box
2	Radial ProAV2 AV Direct Box
2	Electro-Harmonix Hum Debugger Guitar Hum Eliminator Pedal
2	ISP Decimator II Shure PA805SWB Guitar Noise Reduction Pedal
4	Whirlwind ISOXL XLR Line Level Isolation Transformer
2	Whirlwind IMP Pad IMP20 20dB XLR Attenuator
SOUND POWER	
1	400 amp three-phase for sound
3	20 amp circuits at under balcony mix position

The Peabody possesses a full complement of stage boxes, cables, and stands.



MICROPHONE INVENTORY

QUANTITY	DESCRIPTION
8	Shure SM 58
8	Shure SM 57
8	Shure SM 81
4	Shure Beta 58A
4	Shure Beta 57A
1	Shure Beta 91A
1	Shure Beta 52A
5	Shure Beta 98AD/C
2	Shure KSM137
2	Shure KSM141
4	Shure KSM32/CG
1	Shure KSM9HS
2	Sennheiser e906 Supercardioid Guitar Microphone
4	Sennheiser MD421-II Cardoid Dynamic Microphone
2	e845 Supercardioid Dynamic Vocal Microphone
2	AKG C480B Combo Reference Modular Condenser Microphone
1	AKG D112 MKII Dynamic Bass Microphone
4	AKG GN 155 Gooseneck Stand with CK31 Capsules for Choir
4	Crown PCC 160 Floor Microphones
WIRELESS MICROPHONE SYSTEM	
2	Shure ULXD1 Quad Receiver
1	Shure PA805SWB Passive Directional Antenna
4	Shure ULXD2/B58=-G50 Digital Beta 58A Wireless Mic-G50 470-534MHz
4	Shure ULXD2/SM58=-G50 Digital SM58 Wireless Mic-G50 470-534MHz
2	Shure ULXD1 Bodypack Transmitter
2	Shure WA302 1/4 Instrument to TA4F Cable
2	Countryman WCE6T Over-Ear Microphone

PRODUCTION COMMUNICATION

Telex Intercom System

QUANTITY	LOCATION
2	Fly Rail
1	DSR
1	DSL
1	Stage Manager Area
2	Lighting Booth
1	Sound Mix Position Front Balcony
1	Backstage Production Office
1	Box Office
QUANTITY	INVENTORY
8	Belt packs - Assorted
6	Headsets Model PH88
1	Biscuit
2	Handset

ANNOUNCEMENTS & SHOW FEED

Announcements and show feed come from down stage left (stage managers area) to lobby, rose room, dressing rooms and Atlantic Room.

AUDITORIUM LINESET SCHEDULE

Line Set #	Description	Measurement
Upstage edge of proscenium opening		00'0"
00	Fire curtain/main valance	00'6"
01	Main Curtain Traveler	01'4"
02	#1 Electric (permanently wired)	02'4"
03	Open line set	03'4"
04	#1 Orchestra shell ceiling (permanent)	04'6"
05	Open line set	06'6"
06	Legs or open line set	07'10"
07	Border or Open line set	09'8"
08	Mid-stage black traveler (permanent)	10'3"
09	Open line set or projection screen	10'8"
10	Open line set	11'6"
11	#2 Orchestra shell ceiling (permanent)	12'4"
12	Border or open line set	13'3"
13	Legs or open line set	14'0"
14	#2 Electric	15'2"
15	Open line set	15'10"
16	Open line set	17'2"
17	Open line set	17'6"
18	Open line set	17'11"
19	Open line set	18'7"
20	Open line set	19'2"
21	#3 Orchestra shell ceiling (permanent)	20'0"
22	Border or open line set	21'2"
23	Legs or Open Line set	22'4"
24	#3 Electric	23'3"
25	Cyc Lights	23'9"
26	Open line set	24'2"
27	Open line set	25'2"
28	Legs or open line set	26'2"
29	#4 Orchestra shell ceiling (permanent)	27'4"
30	Open line set	29'0"
31	Border or open line set	29'8"
32	Open line set	30'4"
33	Open line set	31'2"
34	Upstage Black traveler	32'4"
35	Cyc or open line set	32'10"

All pipes fly out to 44' above stage deck.

MISC HOUSE INVENTORY

RISER INVENTORY

Orchestra Riser	Wenger 4' x 8' folding type
Riser Heights	Five 8" high Seven 16" high Nine 24" high

ORCHESTRA INVENTORY

100	Stacking Padded Chairs
100	Wenger Music Stands
100	Stand Lights
3	30" Padded Stools
1	4' x 4' Conductor Podium

STAGE DRAPES

4 legs - black velour	28'h x 10'w
4 borders - black velour	10'h x 60'w
2 full stage travelers - black velour	28' high
2 main curtain traveler – maroon velour	30' x 24'
1 valence – maroon velour	8'h x 50'w
1 fire curtain	n/a
1 Cyc Natural Muslin	24'h x 60'w

PIPE AND DRAPE INVENTORY

QUANTITY	DESCRIPTION	MEASUREMENT
20	Uprights	8' & 10' tall
15	Cross Braces	Adjustable from 6'-10'
24	Metal Bases	n/a
4	Black Drapes	80' (5'h x 8'w individual)
7	White Drapes	35' (5'h x 10'w individual)
14	Tan Drapes	70' (5'h x 10'w individual)

PROJECTOR

The Peabody possesses an Epson Powerlite 990U & Stumpfl Monoblox 16' x 9' Front & Rear Screen with a 100 foot HDMI cable.

PIANO

Currently, the Peabody Auditorium has a 9-foot Yamaha CFIIIs Concert Grand. There is a fee to use the piano, pricing can be found in the Rental Rates PDF file on peabodyauditorium.org.





RIGGING POINTS & INFORMATION

**COMING
SOON**

EVENT MARKETING

Thank you for choosing the Peabody Auditorium in Daytona Beach, Florida to host your event. The Peabody Auditorium is a rental only facility, we do not produce or promote events. Media Planning and Buying is the responsibility of the event promoter. The Digital Media Specialist will be available to assist you in the marketing and promotion of your event organically at a local level.

The Peabody Auditorium Marketing Services Include:

- Email Marketing
- Social Media Marketing
- Group Sales
- Content Marketing
- And More..

For assistance with the Peabody Auditorium Marketing Services, contact:

Emilie Smart
Digital Media Specialist
SmartEmilie@codb.us



VENUE SPECIFIC ADVERTISING INFORMATION

Here is some useful information when arranging your marketing buys and developing any creative materials:

- * The Digital Media Specialist can localize any ad mats provided.
- * The Venue logo can be provided by the Digital Media Specialist. If no logo is used, the word mark is: **Peabody Auditorium**

VENUE LOCATION

Peabody Auditorium
600 Auditorium Boulevard
Daytona Beach, FL 32118

TICKET PURCHASE INFORMATION

Patrons can purchase tickets online at www.peabodyauditorium.org.

Ticketmaster toll free at 800-982-2787

In person at the box office at 600 Auditorium Boulevard, Daytona Beach, FL 32118

Box Office Hours:

Monday – Friday 10 am – 5 pm

Saturday – Closed

Sunday – Closed

The Peabody Box Office is open 3 hours prior to showtime.

The Peabody Auditorium is a Ticketmaster facility.



LOCAL INFORMATION

AREA HOTELS & RESTAURANTS

Hotels	Restaurants
Hilton Daytona Beach Oceanfront Resort 100 North Atlantic Avenue Daytona Beach, FL 32118 Phone: 386-254-8200	Ocean Walk Shoppes Features several oceanside restaurants only a 3-minute drive away. 250 North Atlantic Ave Daytona Beach, FL 32118 Phone: 386-258-9544
Hard Rock Hotel Daytona Beach 918 North Atlantic Avenue Daytona Beach, FL 32118 Phone: 386-947-7300	Hog Heaven BBQ Barbecue 37 N Atlantic Avenue Daytona Beach, FL 32118 Phone: 386-257-1212
Daytona Beach Resort & Conference Center 2700 North Atlantic Avenue Daytona Beach, FL 32118 Phone: 386-671-3770	The Health Nut Cafe Health Food Restaurant 715 Earl Street Daytona Beach, FL 32118 Phone: 386-255-9022
Club Wyndham Ocean Walk 300 North Atlantic Avenue Daytona Beach, FL 32118 Phone: 386-323-4800	Daytona Taproom Hamburgers 310 Seabreeze Blvd Daytona Beach, FL 32118 Phone: 386-258-0011
Hampton Inn Daytona Beach/Beachfront 1024 N Atlantic Avenue Daytona Beach, FL 32118 Phone: 386-944-2570	Starbucks Coffee & Beverages 110 S Ocean Ave Daytona Beach, FL 32118 Phone: 386-254-0620
The Plaza Resort & Spa 600 N Atlantic Avenue Daytona Beach, FL 32118 Phone: 386-255-4471	Ocean Deck Restaurant & Beach Bar Seafood 127 S Ocean Avenue Daytona Beach, FL 32118 Phone: 386-253-5224

More restaurants and hotels can be found on www.daytonabeach.com.



DIRECTIONS TO THE PEABODY AUDITORIUM

The Peabody Auditorium is located at 600 Auditorium Boulevard in Daytona Beach, Florida. If you're driving, Daytona Beach is easily accessed from Interstate 95 or Interstate 4. If you're flying, Daytona Beach International Airport is about 15 minutes from the Peabody Auditorium. Just take International Speedway Boulevard (U.S. 92) east to S.R. A1A, then turn north (left). The Peabody Auditorium is about a mile north.

DRIVING

Located near the intersection of Interstate 4 and Interstate 95, exit Interstate 95 (exit #261A) at International Speedway Boulevard (U.S. 92) and head east seven miles to N. Atlantic Avenue (S.R. A1A). Turn left (north) and travel one mile to the Peabody Auditorium.

FLYING

Daytona Beach International Airport (DAB) offers daily nonstop service from Atlanta (Delta Air Lines) and Charlotte (USAirways) and connecting flights from everywhere else. DBIA is just off International Speedway Boulevard and is adjacent to Daytona International Speedway, just minutes from the Peabody Auditorium. Other airports serving the area include Orlando International Airport, Sanford/Orlando International Airport, and Jacksonville International Airport. General and corporate aviation airports in the area include Ormond Beach Municipal Airport, DeLand Municipal Airport, New Smyrna Beach Municipal Airport and Massey Ranch Air Park.

PUBLIC TRANSPORTATION

Votran is the region's public transportation system. It offers daily fixed-route bus service, seasonal beachside trolley service, van pool service and paratransit service. The system also offers service to Orlando and contract services.

TAXI/LIMO SERVICE

Volusia County has many taxi and limo providers. Several taxi companies serve Daytona Beach International Airport. There also are services offering transportation to and from Orlando International Airport.

RENTAL CARS

Major rental car companies have locations at Daytona Beach International Airport inside the main terminal, directly across from the baggage claim area. Major and local rental car companies also have off-airport locations and offer shuttle service.